

1) Make sure Zenstar's driver had been installed.

2) After plug Zenstar into your USB port, please follow the following diagrams to figure out which COM port you are using for Zenstar. (For Windows 2000/XP user)

Fig. 1: Click "Start", then click "Control Panel".



Fig. 2: Click "Performance and Maintenance" (If you are in "Classic View", please click "System" directly).



Fig. 3: Click "System".

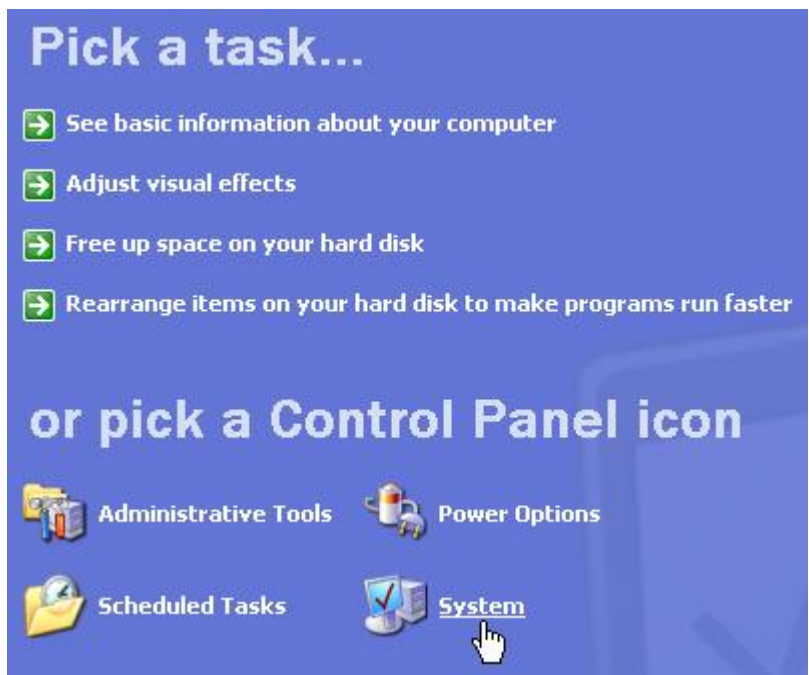
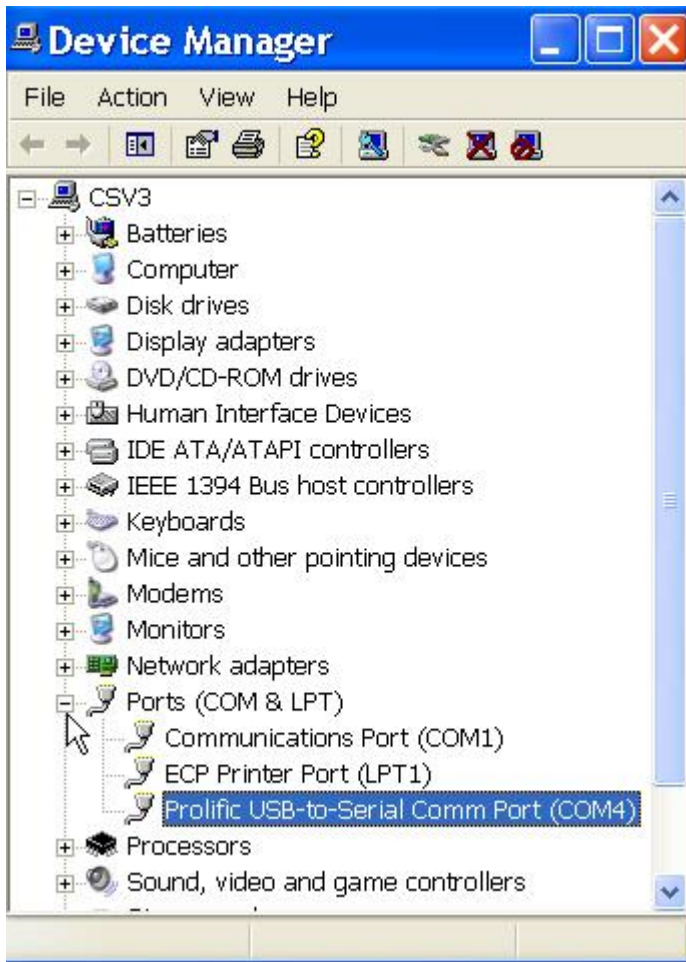


Fig. 4: Click "Hardware" tab, then click "Device Manager".



Fig. 5: Click "Ports (COM & LPT)", then you will see the virtual COM port, which was created by the Zenstar after you plugged it into USB port. In the following diagram, the COM PORT is COM4. Please note that the Virtual COM Port number might be different on every computer or change each time new devices are installed.



3) Set this COM port in your navigation software. You will see your location after Zenstar receive signal. Once Zenstar receive signal, the LED on the Zenstar will be blinking.